

QNAP

TS-2510



Featuring an Intel dual-core CPU, DDR4, and PCIe expansion for M.2 SSD and 5GbE application



HDMI™
HIGH-DEFINITION MULTIMEDIA INTERFACE



Great for photos

- ▲ A lifetime photo collections with accelerated AI object classification, media playback and streaming.
- ▲ TS-251D with good hardware specifications, a PCIe expansion slot, and high performance.
- ▲ Other QTS software capabilities for data backup, sharing, and security.



Some possible issues you should know with cloud services

When the service is terminated, some info is lost

Canon Irista

What happens to all my tags, photo ratings, title and albums?
Unfortunately, this information will be lost as it cannot be exported.

What happens to text I have put in my albums?

If you have added text to your albums, you will need to copy this information manually if you do not want to lose it.

Irista is closing down

Sadly, we've decided to close Irista on January 31, 2020. You can continue to access to your photos until the service closes. Please sign in to download them before this date. [Read our FAQs](#) for more information.

Download Your Photos

Photo/Video quality loss



Google Photos

High quality

- Unlimited free storage.
- Photos are compressed to save space. If a photo is larger than 16MP, it will be resized to 16MP.
- You can print good quality 16MP photos in sizes up to 24 inches x 16 inches.
- Videos higher than 1080p will be resized to high-definition 1080p. A video with 1080p or less will look close to the original. Some information, like closed captions, might be lost.



QuMagie smart albums and accelerated AI classification

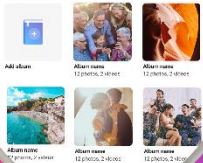
Organize photos with similar faces using facial recognition

Classify photos into 400 different themes using Subject Detection :
People, tags, dates, events, etc.

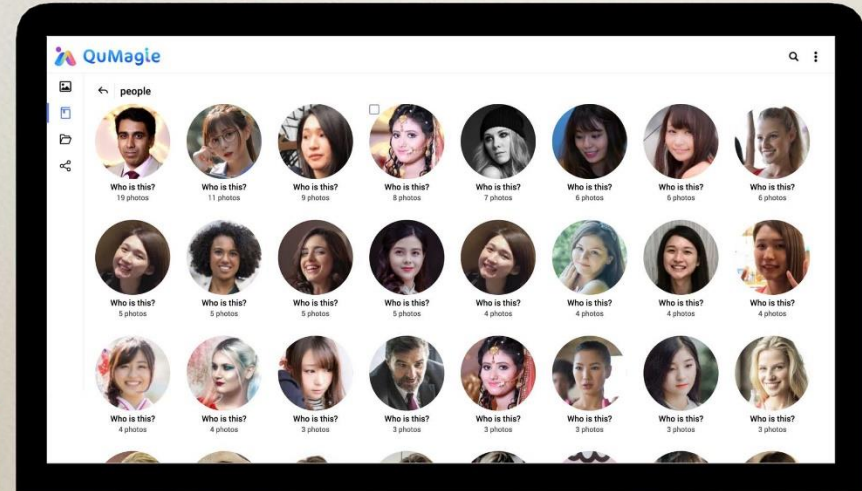


Album View

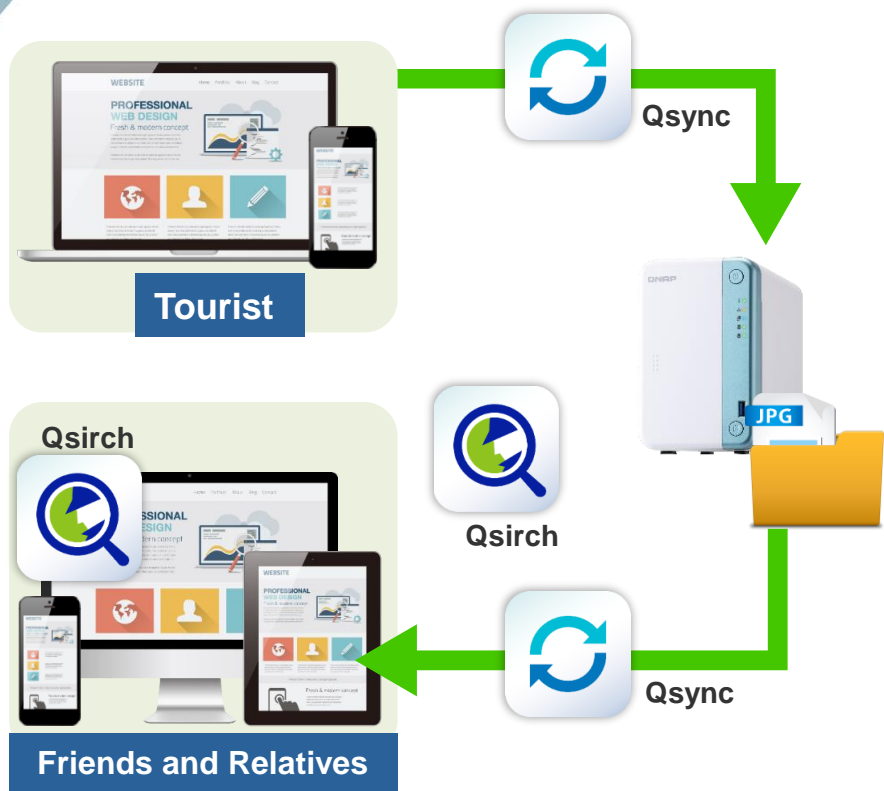
Albums



Folder View



Use Qsync to organize and share daily photos

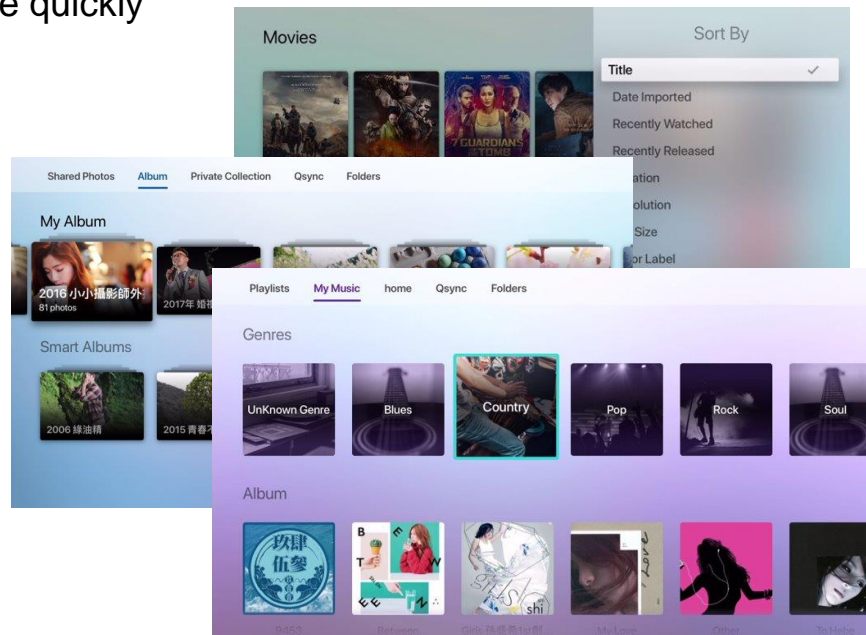
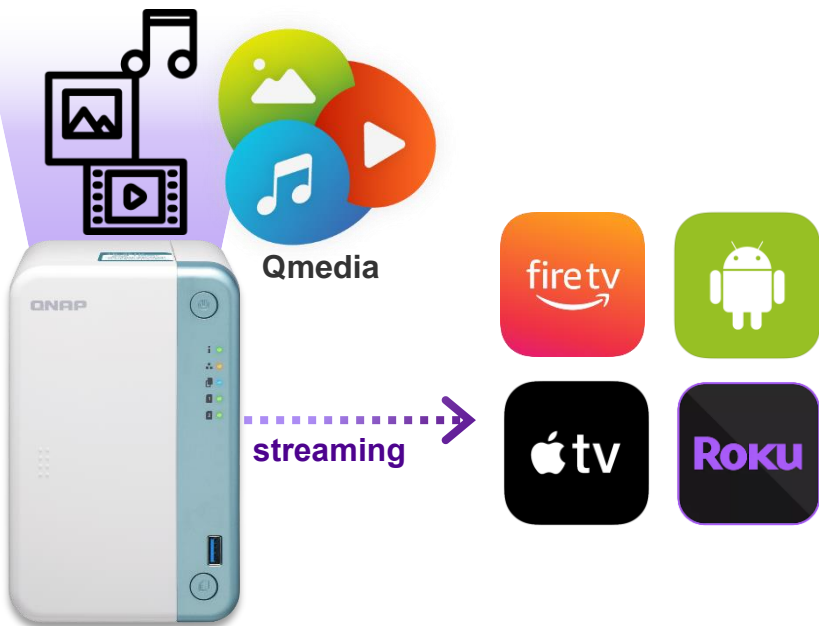


Synchronize data with NAS and devices in real-time

- Travel photos and videos sync to NAS via Qsync
- Use Qfiling to archive files
- Cross-platform device synchronization (Editing photos and videos, writing a travel blog, displaying high-resolution photo movies on the PC platform)
- Use Qsirch to search for photos and videos
- Share with other friends

Stream files to Apple TV、Fire TV、Android TV、Roku

- Use the remote control of your media player to navigate
- Categorization and multiple sorting methods to enjoy your media content
- Filters and keyword searches to locate a file quickly



Set content sources for all multimedia applications

Go to Content Management in Multimedia Console

Assign folders as content sources for each application.

The screenshot displays the QNAP Multimedia Console interface. The left sidebar contains navigation options: Overview, Content Management (highlighted with a purple box), Indexing, Thumbnail Generation, Transcoding, and Multimedia App Suite. The main content area is titled 'Content Management' and features four application icons: Photo Station (selected), Video Station, Music Station, and DLNA. Below these icons, the 'Content Sources' section is visible, which includes a table of current sources and an 'Edit' button.

Content sources: 4	
Used space:	3.7 GB
Photos:	831
Videos:	4

Multimedia/CC free pic/
Multimedia/Face pic/
Multimedia/Photos/
Public/

[Edit](#)

[Excluded System Sources](#)

Go to Settings in Photo Station to filter content from the sources listed above.
Multimedia Console generates thumbnails for multimedia content in the selected file paths.

Plex Media Server with transcoding support



Full multimedia experience over competitors



HDMI™
HIGH DEFINITION MULTIMEDIA INTERFACE

4K HDMI v2.0b 60Hz output



Up to 2-ch 4K real-time transcoding



Use Cinema28 for multi-room streaming

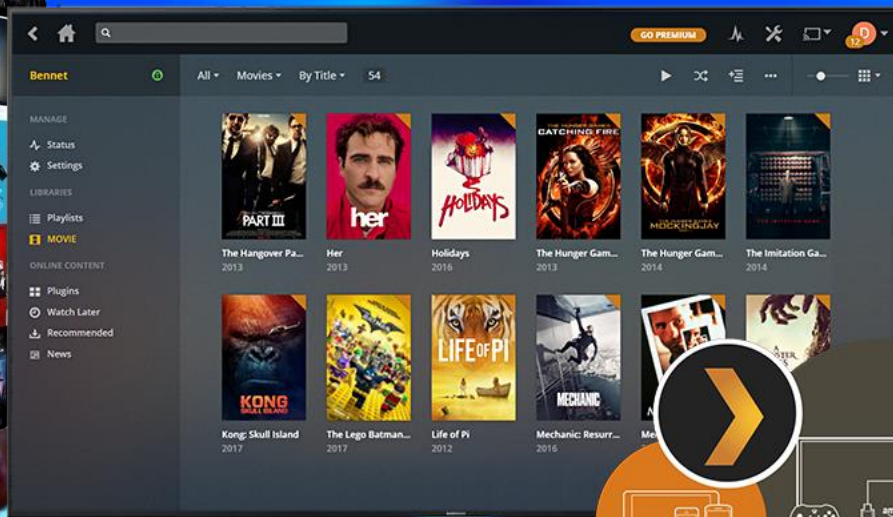


Optional RM-IR004 remote

TS-2510

Up to 4K video real-time transcoding

Integrates Intel® HD Graphics 600 graphics processor, up to 700 MHz, providing up to **2** channels of video playback and transcoding for smooth playback on versatile client devices. QNAP QuMagie is also benefited from AI acceleration.



Intel Celeron J4005 dual-core 2.0GHz CPU

x86 Multimedia NAS



Dual-core **J4005**
Gemini Lake SoC

2.0GHz
Base

2.7GHz
Max burst



Dual-channel RAM

2 x SODIMM DDR4 slots, up to 8 GB total

RAM ordering parts :

RAM-4GDR4A0-SO-2400

RAM-2GDR4A0-SO-2400

HDMI™
HIGH-DEFINITION MULTIMEDIA INTERFACE



TS-251D-2G

2 GB RAM (1 x **2 GB**)

TS-251D-4G

4 GB RAM (1 x **4 GB**)

TS-2510

TS-251D front view



Power button

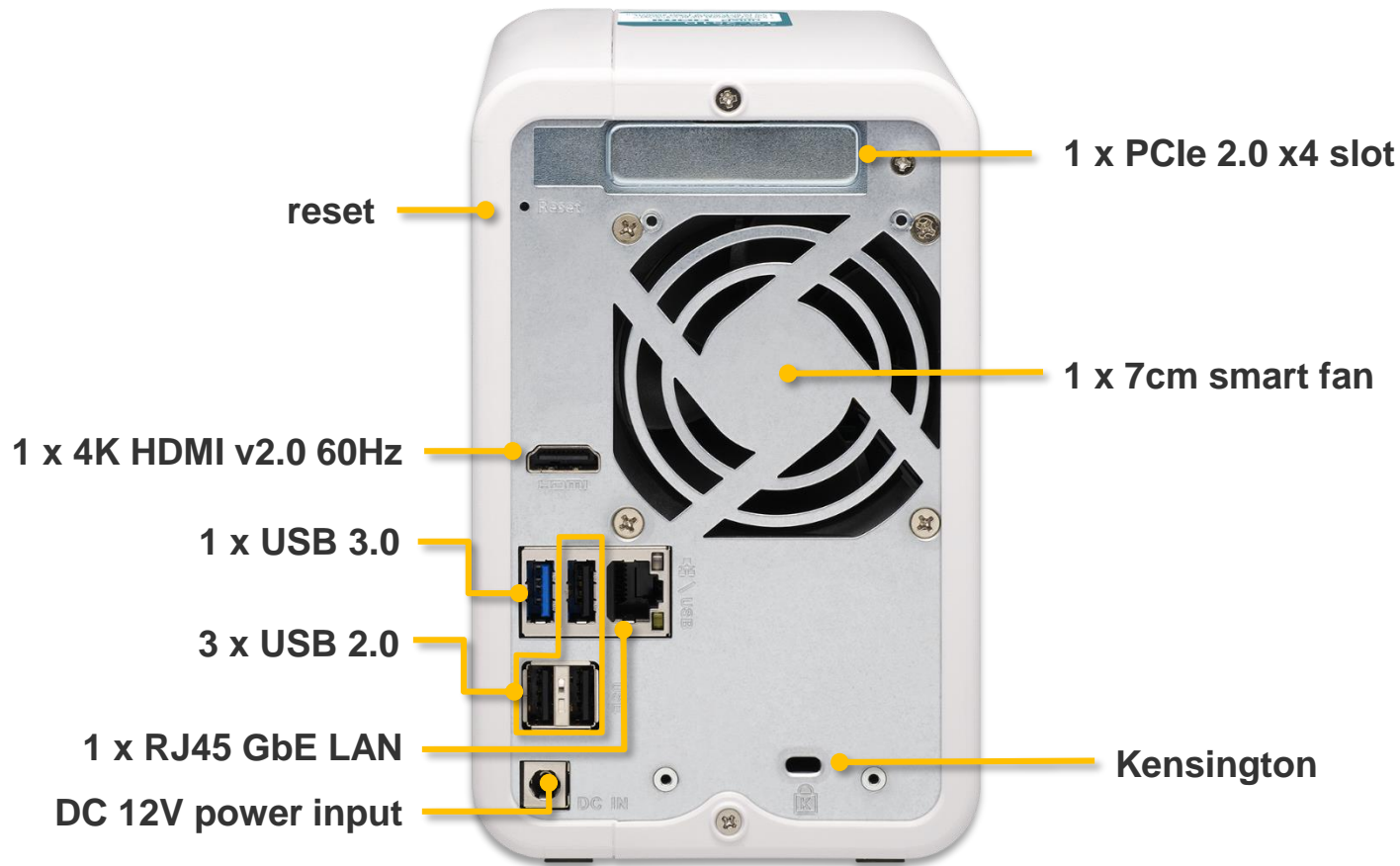
LEDs:
STATUS, LAN, USB

LEDs:
Drive 1, Drive 2

1 x USB 3.0 port

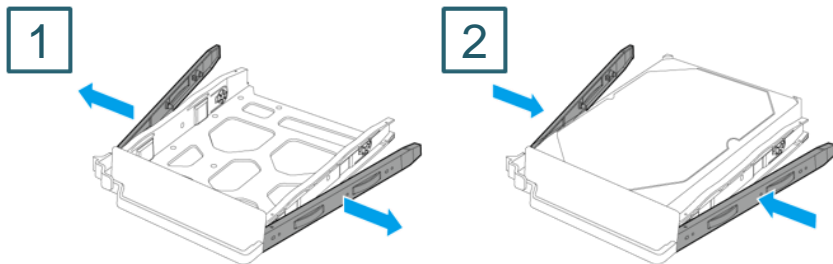
Copy button

TS-251D rear view

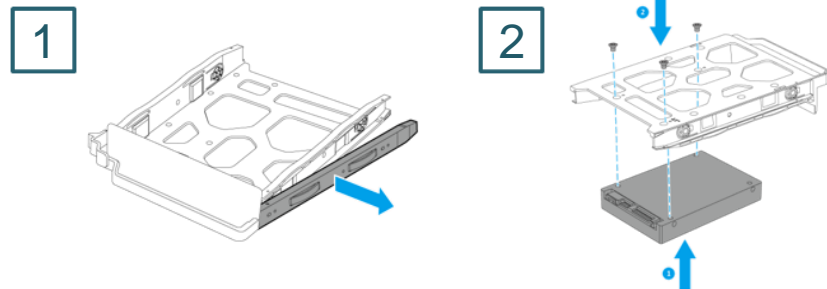


Easy to get started

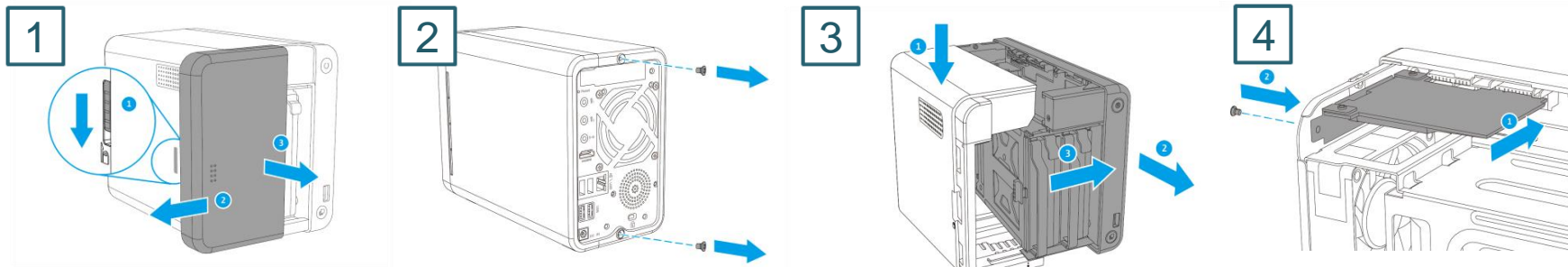
3.5-inch HDD: tool-less installation



2.5-inch HDD/SSD: screw installation



Install a PCIe card by removing a few screws and the cover



Upgrade the memory

2 x DDR4 SODIMM, dual-channel slots, up to 8 GB total

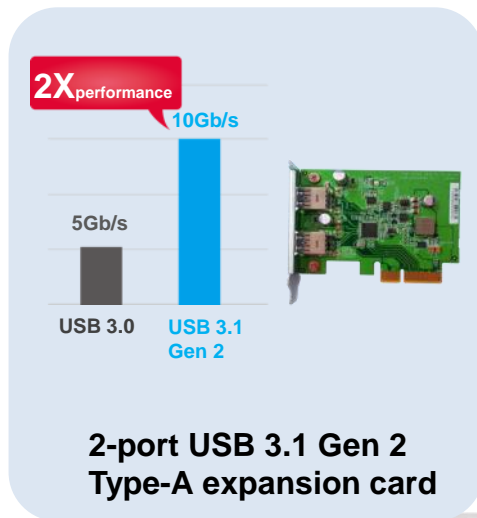
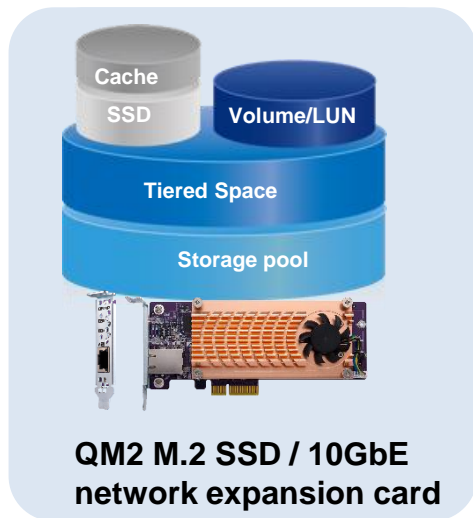


RAM pars : 4GB: RAM-4GDR4A0-SO-2400

2GB: RAM-2GDR4A0-SO-2400



A versatile NAS that moves forward with you



1 PCIe 2.0 x4 slot

Add M.2 SSD slots to TS-251D with a QM2 card

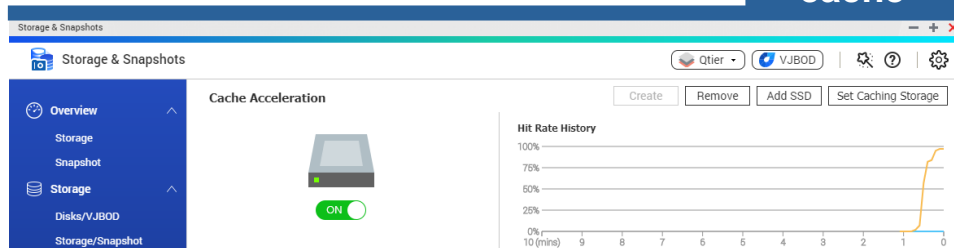


QM2-2S



Accelerates random IOPS

SSD cache



SSD tier

Performance and storage capacity

Create Storage Pool Wizard

Introduction Select Disk(s) Summary

Select an Introduction

Tier: Ultra-high Speed (SSD)

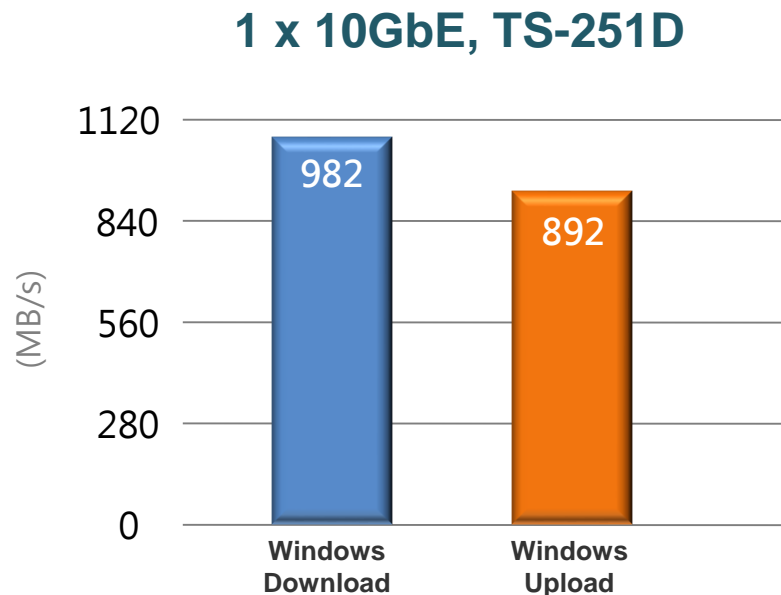
SSD

SATA

Enclosure Unit [Total: 1 Unit(s)]: NAS Host [available disk(s): 2/4]

TS-251D

10GbE/5GbE/2.5GbE via PCIe expansion



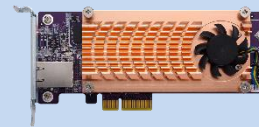
2 x SFP+

QXG-10G2SF-CX4



1 x 10GBASE-T

QM2-2S10G1T
QM2-2P10G1T



1 x 10GBASE-T

QXG-10G1T



1 x 5GBASE-T

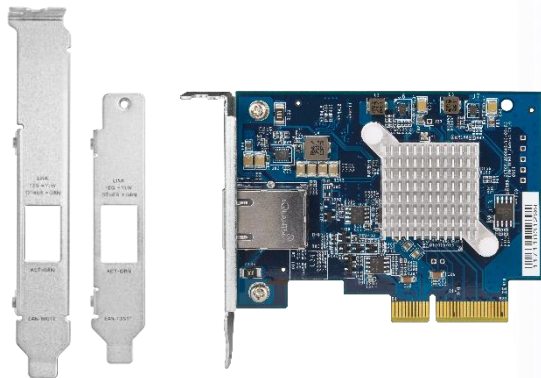
QXG-5G1T-111C



Tested in QNAP lab. Results vary depending on the environment.
Test Configuration: NAS: TS-251D-4G, QTS 4.4.2, Windows upload/download, MTU-9000
RAID Configuration: RAID 0; 2 x Samsung 850 Pro 512GB; QNAP QXG-10G1T

Client PC: Intel® Core™ i7-6700 3.40GHz CPU; 32GB RAM; Intel X550 NIC with MTU-9000; Windows® 10 Pro

Install a PCIe expansion card and 10GbE performance test



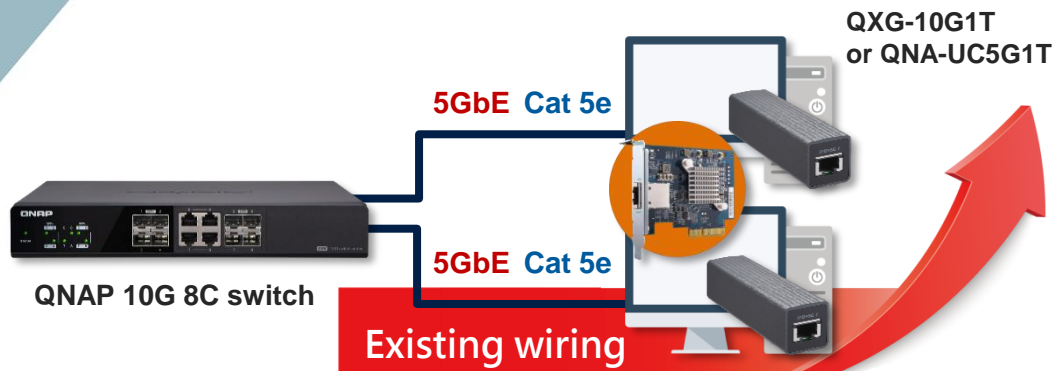
QXG-10G1T

1 x 10GBASE-T

TS-251D with 2 x 2.5" SSD



Use a USB to 5GbE adapter if the PCIe slot is occupied



QNAP
QNA-UC5G1T:
USB 3.0 to
5GbE/2.5GbE/1GbE
adapter



Existing wiring



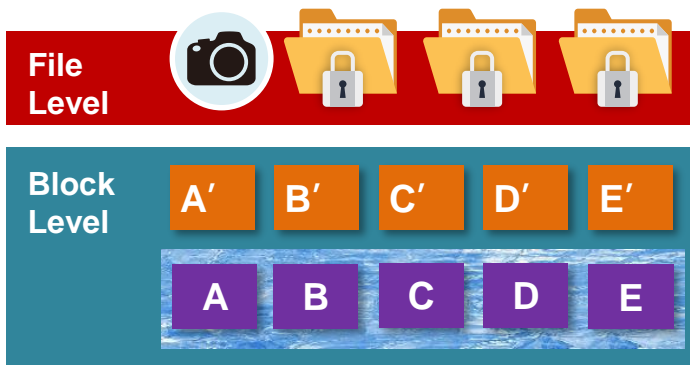
- ⚠ Un-supported functions in QTS with the QNA adapter:
- Port trunking
 - DHCP server
 - RADVD server
 - Static route

QNAP snapshot features for file recovery

1. Fully supports all storage configurations at the storage pool level.
2. Easily take, manage and restore snapshots.
3. Using the mature Ext4 file system for “out of volume” snapshots

RAM Size	TS-251B SKU	Maximum Total Snapshot Number	Maximum Snapshot Number per Volume/LUN
2GB	TS-251D-2G	64	32
4GB and more	TS-251D-4G	1024	256

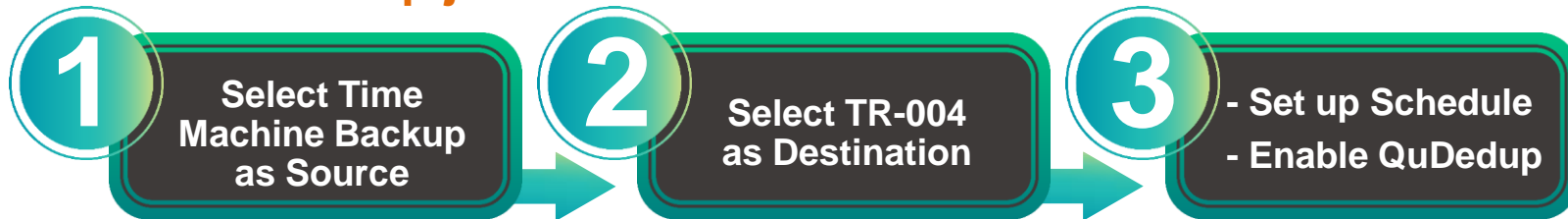
- Ransomware cannot overwrite snapshots which are stored out of volume



Free Mac Time Machine backup



Create the backup job :

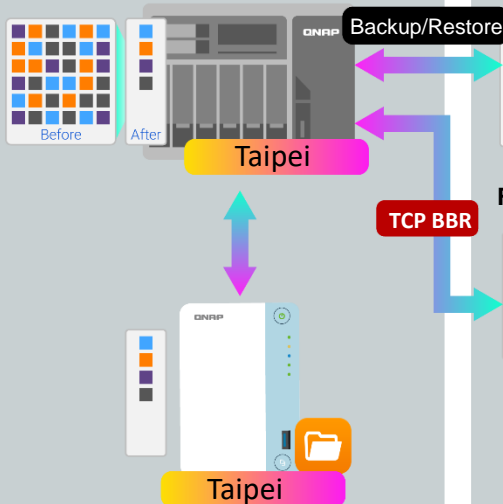


Backup data with deduplication



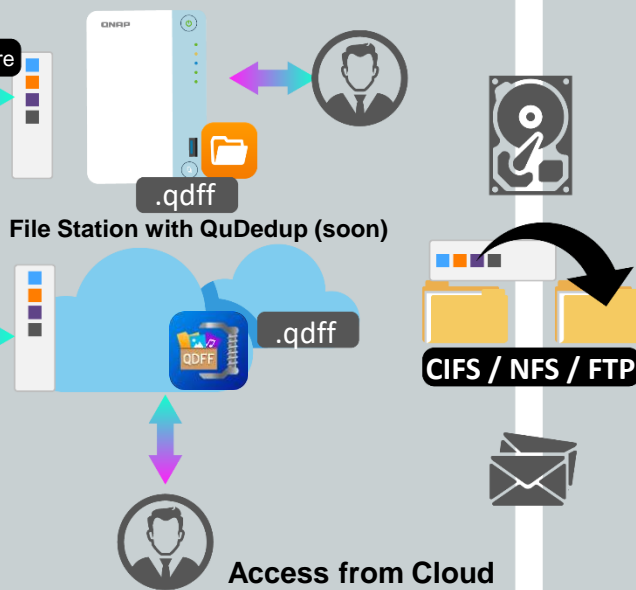
HBS 3 (Hybrid Backup Sync 3)

From local NAS
(via HBS)



File Station with QuDedup (soon)

From remote NAS
(via File Station)



Carry and Use
(QuDedup Extract Tool)



Enhance efficiency with online collaboration

Note taking

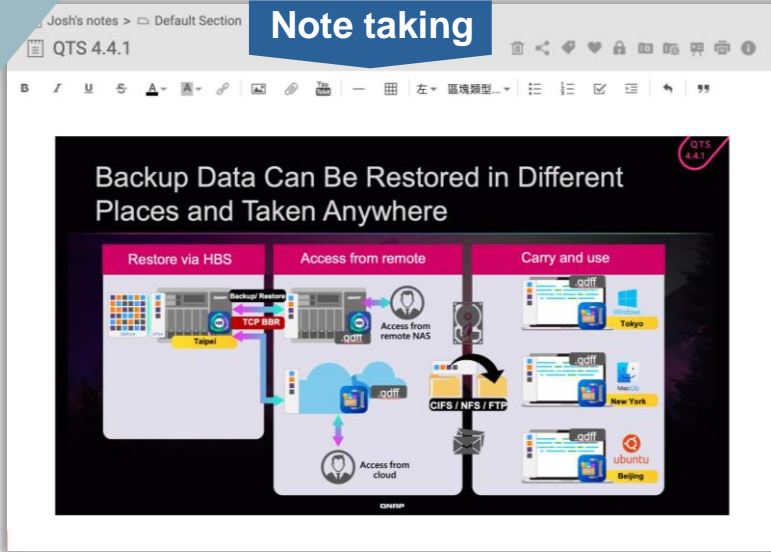
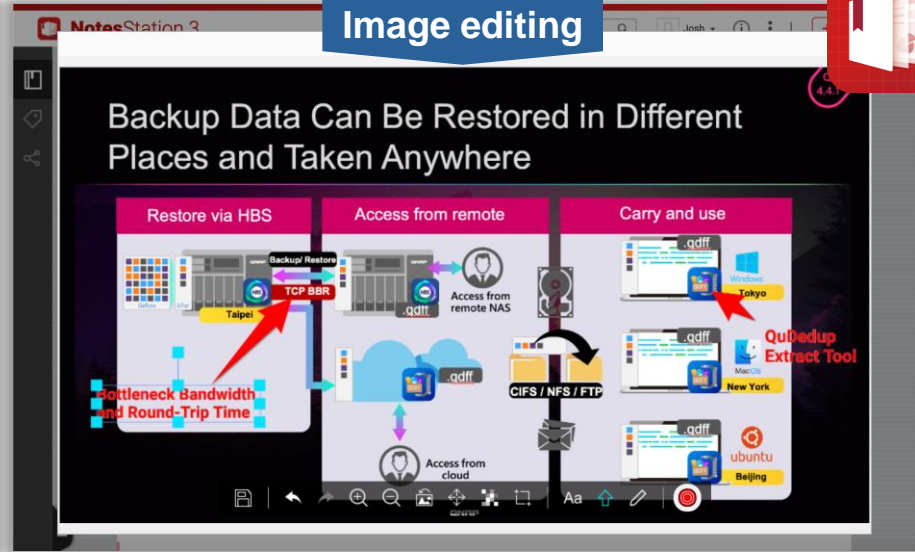


Image editing



Notes Station 3



Link



Insert table



Rotate/Flip



Cut tool



Chrome extension



Insert file



Check list



Aa Text tool



Brush tool



Mobile apps



Insert YouTube



Insert Image



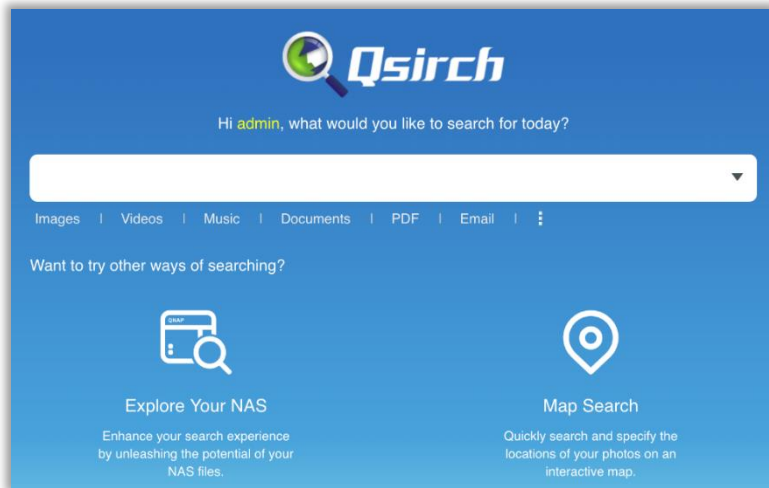
Shape tool



Pixelated tool

TS-2510

Qsirch 4.0 makes it easy to search files



- Search within NAS and on the Internet
- Large file preview window
- Advanced search for complex keyword search
- 35+ powerful filter conditions
- Easy steps from previewing to sharing

• Various ways to search



QNAP VPN and QBelt VPN protocol



**Secure Encrypted
Connection:**

**DTLS + SSL + AES-
256 encryption**

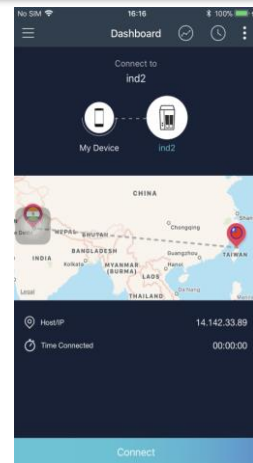
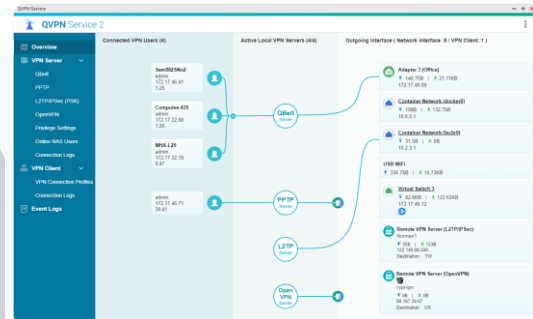


**New QBelt
protocol:**

**Decreases the chance
of being detected**



**Works on many
desktop and
mobile devices**



QVR Pro surveillance solution



For NAS with 4GB RAM or more

5,000+ compatible IP cameras

8 free camera channels

30 channels max. (optional license)

QUSBCam2 for webcam recording



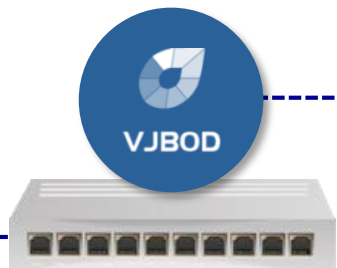
Surveillance Station 5.1

- 2 free channels
- 32 channels max. (optional license)

For NAS with 2GB RAM

Use Virtual JBOD to expand NAS capacity

Max 8 VJBOD connections



1GbE / 10GbE
iSCSI VJBOD connections



TS-832XU



TS-832X

QNAP TR RAID enclosure supports 2 modes on NAS

- TS-251D supports maximum two QNAP TR-002 & TR-004 RAID enclosures.
- Internal mode with storage pool support or external mode with cross-platform compatibility with Windows/Mac computers.

Mode 1: Expanding the NAS
with new volume





Mode 2: Work as backup
destination for snapshot replica



TS-251D

Comparing TS-251D and TS-251B

NAS model	 QNAP TS-251D	 QNAP TS-251B
Processor	Intel x86 Celeron J4005 dual-core 2.0 GHz, burst up to 2.7 GHz	Intel x86 Celeron J3355 dual-core 2.0 GHz, burst up to 2.5 GHz
Memory (expandable)	TS-251D-2G: 1 x 2 GB TS-251D-4G: 1 x 4 GB Max. 8 GB (4 GB + 4 GB)	TS-251B-2G: 1 x 2 GB TS-251B-4G: 1 x 4 GB Max. 8 GB (4 GB + 4 GB)
PCIe slot	1 x Gen2 (x4) slot	1 x Gen2 (x2) slot
10GbE/5GbE/2.5GbE	Expandable via a QNAP QXG PCIe adapter	
Performance	Over 500MB/s	
M.2 SSD slots	Expandable via a QM2 PCIe adapter	
HW transcoding	Yes	
HDMI output	4K HDMI v2.0b 60Hz , optional QNAP RM-IR-004 remote control	4K HDMI v1.4b 30Hz, optional QNAP RM-IR-004 remote control
USB 3.0 / 2.0	USB 3.0: 2 USB 2.0: 3	USB 3.0: 2 USB 2.0: 3
Camera licenses	free: 8 / max: 30	free: 8 / max: 30

Only on
QNAP

Optional 3-year
Extended Warranty
available



Ordering Number:
LIC-NAS-EXTW-GREEN-3Y

TS-251D

QNAP

TS-2510



QNAP is your best choice!



HDMI
HIGH-DEFINITION MULTIMEDIA INTERFACE

