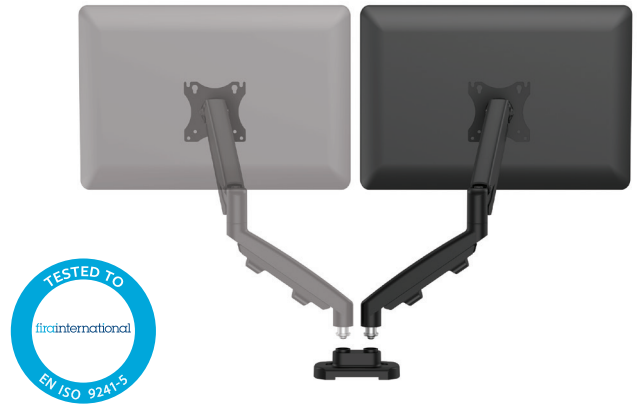


## Dual Monitor Arm Kit



### Features:

- Convert your Eppa™ single monitor arm into a dual configuration and create a multi-display, productive workspace.
- Eppa™ offers effortless gas spring finger touch adjustment, perfect for hot desking and collaborative working.
- Minimalistic and stylish design with built-in cable management to keep you tangle free.
- Desk clamp and grommet mount included for secure and easy attachment options.
- Available in black, white or silver.
- Tested by FIRA International Ltd to comply with the ergonomic requirements set out in the European Health and Safety Legislation: EN ISO 9241-5.

### Specifications:

	White	Black	Silver
<b>Item Number</b>	9683801	9683601	9683701
<b>Colour</b>	RAL 9016	RAL 9017	RAL 9023
<b>Product Dimensions (H x W x D)</b>	480 x 117 x 565mm		
<b>Product Weight</b>	3.22kg		
<b>Height Adjustment Range</b>	266mm		
<b>Height Adjustment Measurements</b>	140 - 406mm		
<b>Reach Range</b>	102 - 538mm		
<b>Rotation</b>	360°		
<b>Pan</b>	180°		
<b>Tilt</b>	+/- 90°		
<b>Arm Swivel</b>	360°		
<b>VESA Compliant</b>	75 x 75   100 x 100		
<b>Desk Compatibility</b>	Desk Thickness: 10 - 85mm   Grommet Size: 8 - 82mm		
<b>Tension Adjustments</b>	Yes		
<b>Weight Capacity (kg)</b>	1 - 8kg		
<b>Maximum Monitor Size</b>	39" / 99.06cm left to right		
<b>Outer Pack Barcode (SCS)</b>	50043859749374	50043859749350	50043859749367
<b>Warranty</b>	5 years limited		