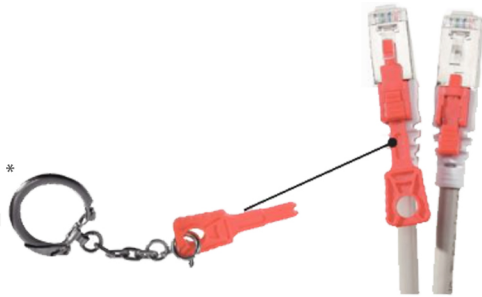


## Cat6a Patch Cable - Shielded Lockable

S/FTP Copper

## Network



### Features:

Category:	Cat6A
Frequency:	500 Mhz
Impedance:	100 Ohms
Conductor:	Copper
Shielding:	General by Copper braid, and pair by aluminium foil
Wiring Standard:	ANSI/TIA 568C.2
Jacket Material:	PVC
Packaging:	Seperate Packs

▶ [View Range](#)



LENGTH	GREY	ACCESSORY
0.5m	848944-HY	Lock Key 848942-HY
1.0m	848945-HY	
2.0m	848976-HY	
3.0m	848947-HY	
5.0m	848948-HY	

\*Unlocking Key sold separately

### ProConnectLite®

All Hypertec ProConnectLite® products come with Lifetime Warranty and Free UK, Pre and Post Sale Technical Support. Our team of Connectivity Experts are also on hand to help assist with any Cabling and Connectivity requirements, please email [proconnect@hypertec.co.uk](mailto:proconnect@hypertec.co.uk).