

# BakkerElkhuizen S-board 840 Compact Keyboard

User manual



Qwerty

DE



NL



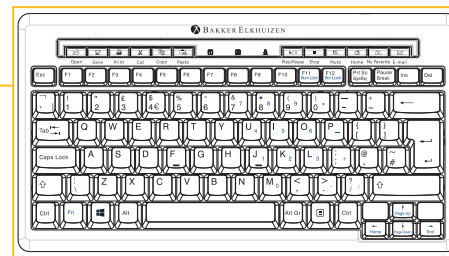
UK



COM



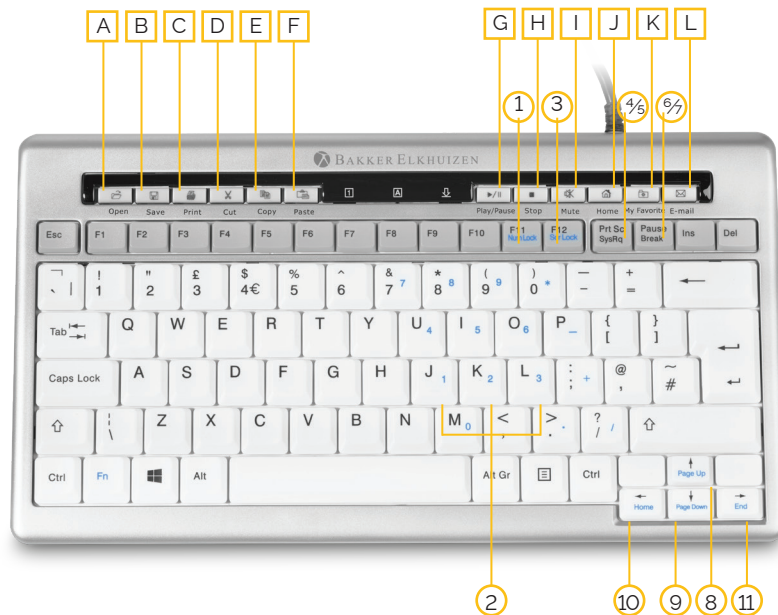
FR



## User Manual

### S-board 840 Compact Keyboard

- |   |             |   |  |
|---|-------------|---|--|
| A | Open        | > | Open an item                           |
| B | Save        | > | Save an item                           |
| C | Print       | > | Print an item                          |
| D | Cut         | > | Cut selected text                      |
| E | Copy        | > | Copy selected text                     |
| F | Paste       | > | Paste selected text                    |
| G | Play/Pause  | > | Play selected item in default player   |
| H | Stop        | > | Stop playing selected item             |
| I | Mute        | > | Mute sound                             |
| J | Home        | > | Go to Homepage internet browser        |
| K | My Favorite | > | Start my favorites in internet browser |
| L | E-Mail      | > | Make new email                         |



- |   |                        |   |                                      |    |                     |   |   |
|---|------------------------|---|--------------------------------------|----|---------------------|---|---|
| 1 | Fn + F11/NumLock       | > | Enable NumLock                       | 6  | Pause/Break         | > | Pause                                     |
| 2 | Fn + J; Fn + K; Fn + L | > | 1; 2; 3 and so on                    | 7  | Ctrl. + Pause/Break | > | Break                                     |
| 3 | Fn + F12/ScrLock       | > | Enable ScrollLock                    | 8  | Fn + Page up        | > | Page up: move up one screen at a time     |
| 4 | PrtSc/SysRq            | > | Print Screen                         | 9  | Fn + Page down      | > | Page down: move down one screen at a time |
| 5 | Shift + PrtSc/SysRq    | > | System Request, enable terminal mode | 10 | Fn + Home           | > | Home: move to beginning of the line       |
|   |                        |   |                                      | 11 | Fn + End            | > | End: move to the end of the line          |

To extend the life of the S-Board 840, we recommend that you use the supplied case when you store your S-Board 840.

## Features

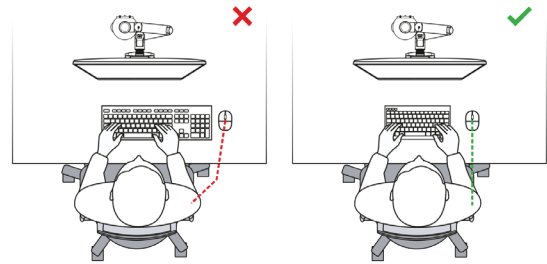
Compact keyboard S-board 840, reduces the distance a user has to reach for operating the mouse and allows a more comfortable body posture. The mouse can be positioned right in front of the right shoulder, which facilitates a better posture of the right arm and shoulder when using the mouse.

## Key feel

The keys of the S-Board 840 have a light touch. This is made possible by the application of a scissor mechanism instead of a traditional membrane, giving you very fine tactile feedback.

## Light key color

The dark letters on the light background of the keyboard make reading easier and result in higher productivity.



BakkerElkhuizen  
Lynton House  
7 - 12 Tavistock Square  
London WC1HgLT  
United Kingdom  
+44 203 6083569  
email. [info@bakkerelkhuizen.com](mailto:info@bakkerelkhuizen.com)

All rights reserved. All trade names are registered trademarks of the respective manufacturers. All specifications are subject to subject to change without notice.

Our electronic products can be handed in at a Wecycle-collection point.

