



WAN-4201 Version: 1

## 20dBi 5GHz Directional Panel Antenna

The LevelOne WAN-4201 is a directional antenna for increased performance and reduced interference, operating on the 5 GHz frequency. WAN-4201 can be mounted either indoors or outdoors. The antenna's gain value is 20dBi, and if mounted outdoors the weatherproof housing can withstand temperatures from minus 30°C up to 60°C, as well as rain, snow, dust and other harsh conditions.

### Key Features

- Provides 20dBi directional operation
- Directional operation provides extended point to point coverage
- For IEEE 802.11a/n Wireless applications in 5 GHz frequency range
- Low wind loading
- -40°C to 70°C operating temperature range

### Specifications

#### System Specifications

Connectors and Cabling:

N Female

Impedance (Ohms):

50 Ohms

HPBW / Horizontal:

15.9°

HPBW / Vertical:

14.9°

VSWR:

? 2.0

Polarization:

Vertical

#### Wireless

Frequency Band:

5.1~5.835GHz

#### Performance



Return Loss:  
? -10

## Environment

Temperature (°C):  
-30? ~ +60?

Humidity (Non-condensing):  
95%@55?

## Physical Specifications

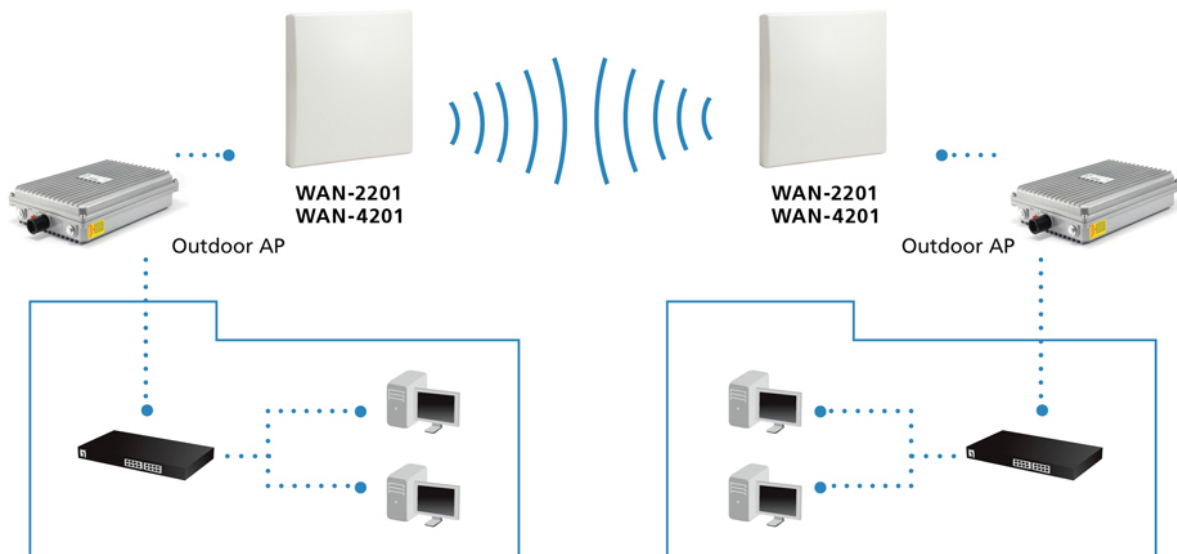
Dimensions (W x D x H mm):  
330\*295\*35 mm

Weight (g):  
1044 g

## Reliability

Survival Wind Speed:  
50 m/s

## Diagram



## Order Information

WAN-4201

## Package Contents

WAN-4201  
Pole Mount Kit  
Quick Installation Guide

## Optional Accessory



### **ANC-4130**

3m 400 Series N Plug to N Jack Antenna Cable



### **ANC-4160**

6m 400 Series N Plug to N Jack Antenna Cable

No liability or responsibility for any errors or omissions in the content.  
Specifications are subject to change without notice.  
All mentioned brand names are registered trademarks and property of their owners.  
Copyright © Digital Data Communications GmbH, Germany. All Rights Reserved.