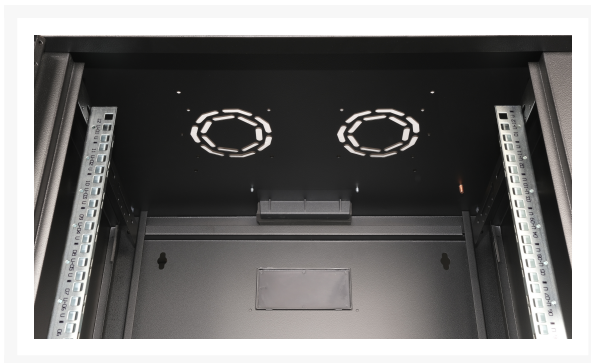
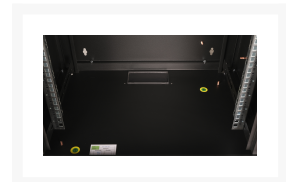


EQUIP PRO MOUNT 19' CABINET, 12U, 600X450MM, RAL9005 BLACK

Product Images





Short Description

- 12U cabinet, designed for optimal performance in every space
- 600X450MM Mountable Network Cabinet
- Ships preassembled for easy setup at your location
- The cabinet comes with a tempered glass frontdoor to provide unmatched strength while maintaining clear visibility
- Sidepanels are removable

Description

Our Wall Mounting 'Pro Mount' Cabinets are tailored for a hassle-free and efficient setup of both active and passive network components, emphasizing sleek cable management. Constructed from steel sheets up to 1.5 mm thick, every rack stands out for its robustness and durability. These cabinets are beautifully finished with a powder coating in shades of grey (RAL 7035) and black (RAL 9005). Wall mounting has been simplified for users, and for those preferring standalone configurations, individual leveling feet or castors are available. The door and side panels are designed for easy detachment, with the option to switch the door's orientation from right to left. For enhanced air circulation, the roof features integrated ventilation slots. Each cabinet is equipped with a set of two pre-mounted 483 mm (19") profile rails. These rails are galvanized, feature height unit markings readable from both directions, and are adjustable in depth. The back frame also incorporates 483 mm (19") punch-outs. Prioritizing efficient cable management, the roof boasts a sliding cable entry panel with a rubber seal. Punched-out cable entries with plastic covers are found on the rear wall and base, and the rear frame offers brushes on both the top and bottom. To fulfill a variety of operational demands, an extensive range of accessory options, such as cable management tools and shelves, is available.

Additional Information

| | |
|------------------------------------|---------------------------|
| Number of cartons per pallet | 12 piece |
| Pallet net weight | 16000 gram |
| Pallet gross volume | 3174600 cubic_centimeter |
| Package volume | 11840400 cubic_centimeter |
| Maximum number of stacking cartons | 3 piece |
| Pallet net length | 1300 millimeter |
| Pallet net width | 1100 millimeter |
| Pallet net height | 2220 millimeter |
| Manual | Yes |
| Mounting kit | Yes |
| Size (imperial) | 13.4 inch |
| Height | 640 millimeter |
| Width | 450 millimeter |
| Depth | 600 millimeter |
| Material thickness | 24.5 millimeter |
| Inner height | 533 millimeter |
| Inner width | 595 millimeter |
| Minimum rack depth supported | 305 millimeter |
| Maximum rack depth supported | 370 millimeter |
| Inner depth | 440 millimeter |
| Weight | 22500 gram |
| Wall mountable | Yes |
| Key lock | Yes |
| Housing material | Steel |
| Built-in UPS | No |
| Rack rails | Yes |

| | |
|-----------------------------|-------------------|
| Frame type | Closed |
| Assembly required | No |
| Preassembled | Yes |
| Soundproof | No |
| Castor wheels | No |
| Type | Wall mounted rack |
| Rack capacity | 12U |
| Removable back door | No |
| Removable front door | Yes |
| Back door construction | Steel |
| Front door construction | Tempered glass |
| Side panel construction | Steel |
| Side panel key lock | No |
| Back door key lock | No |
| Front door key lock | Yes |
| Side panels included | Yes |
| Rack rail thickness | 1.5 millimeter |
| Stabilizing foot screw | No |
| Adjustable stand | Yes |
| Monitoring | No |
| Main PDU | No |
| Product design | 2-Post |
| Cooling type | Passive |
| Door opening angle | 210 degree |
| Mounting hole shape | Square |
| Removable side panels | Yes |
| Number of layers per pallet | 1 piece |

| | |
|-----------------------------|--------------------|
| Pallet gross weight | 316000 gram |
| Harmonized System (HS) code | 853710980019 |
| Carbon footprint | 3.8475 kilogram |
| Quantity per pallet | 12 piece |
| Sustainability compliance | Yes |
| Number of screws | 8 |
| Screws included | Yes |
| Wall mounting kit | Yes |
| Temperature sensor | No |
| Quantity per pack | 12 piece |
| Plinth panel | No |
| Nuts included | Yes |
| Number of nuts | 8 |
| Package depth | 520 millimeter |
| Package height | 690 millimeter |
| Package width | 660 millimeter |
| Grounding kit | Yes |
| Quick installation guide | Yes |
| Package weight | 2500 gram |
| Adjustable feet | No |
| Adjustable depth | Yes |
| Cable management | No |
| Color | Black |
| EAN | 4015867232248 |
| Model Number | EPM-12-6045-B-CBAA |

