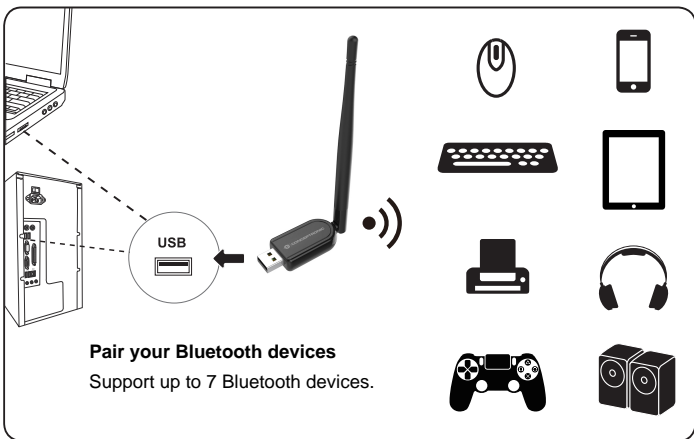


Multilingual quick installation guide

Long Range Bluetooth 5.1 USB Adapter with External Antenna

ABBY07B

Installation



System Requirement

- Supported operating system: Windows 7/8.1/10/11 (32/64 bit)

Specifications

- Bluetooth version: 5.1
- Frequency range: 2.4GHz (2402-2480mHz)
- Rated voltage: DC 5V
- Working distance: 0 – 100m

ENGLISH

Installation:

Windows 8.1/10/11 (32/64 bit)

- Insert the ABBY07B into a free USB port on your computer. Your computer will recognize and install the ABBY07B automatically. No driver installation is required.

Windows 7 (32/64 bit)

- Download and install the ABBY07B driver from https://www.conceptronic.net/conceptronic_en/amfile/file/download/file/16248/product/12485/
- Insert the ABBY07B into a free USB port on your computer.

Usage:

- When your computer has automatically installed the default Microsoft driver, a Bluetooth icon will appear in your system tray:



- You can access the Microsoft Bluetooth Stack by double-clicking on the Bluetooth icon in your system tray, or by selecting the Bluetooth icon from your control panel.

DEUTSCH

Installation:

Windows 8.1/10/11 (32/64 bit)

- Schließen Sie den ABBY07B an einen freien USB-Port Ihres Computers an. Der Computer erkennt und installiert den ABBY07B automatisch. Keine Treiberinstallation erforderlich.

Windows 7 (32/64 bit)

- Treiber der ABBY07B herunterladen und installieren:
https://www.conceptronic.net/conceptronic_en/amfile/file/download/file/16248/product/12485/
- Schließen Sie den ABBY07B an einen freien USB-Port Ihres Computers an.

Verwendung:

- Nachdem Ihr Computer den Microsoft-Standardtreiber automatisch installiert hat, erscheint ein Bluetooth-Symbol in Ihrer Kontrollleiste.



- Sie können durch Doppelklicken auf das Bluetooth-Symbol in Ihrer Kontrollleiste oder durch Auswählen des Bluetooth-Symbols in der Systemsteuerung auf den Microsoft Bluetooth-Stack zugreifen.

FRANCAIS

Installation:

Windows 8.1/10/11 (32/64 bit)

- Introduisez le ABBY07B dans un port USB libre de votre ordinateur. L'ordinateur reconnaît et installe automatiquement le ABBY07B. Aucune installation de pilote n'est nécessaire.

Windows 7 (32/64 bit)

- Télécharger et installer le pilote ABBY07B depuis https://www.conceptronic.net/conceptronic_en/amfile/file/download/file/16248/product/12485/
- Introduisez le ABBY07B dans un port USB libre de votre ordinateur.

Utilisation:

- Lorsque votre ordinateur a terminé d'installer automatiquement le driver de Microsoft par défaut, une icône Bluetooth s'affiche sur votre plateau système :



- Vous pouvez accéder à Microsoft Bluetooth Stack en cliquant deux fois sur l'icône Bluetooth dans votre plateau système ou en sélectionnant l'icône Bluetooth dans votre panneau de configuration

ESPAÑOL

Instalación:

Windows 8.1/10/11 (32/64 bit)

- Conecte el ABBY07B a un puerto USB libre del ordenador. El ordenador detectará e instalará automáticamente el ABBY07B. No se necesita instalar ningún driver.

Windows 7 (32/64 bit)

- Descargue e instale el driver de ABBY07B desde https://www.conceptronic.net/conceptronic_en/amfile/file/download/file/16248/product/12485/
- Conecte el ABBY07B a un puerto USB libre del ordenador.

Utilización:

- Cuando su ordenador haya instalado automáticamente el driver por defecto de Microsoft, aparecerá un icono de Bluetooth en la bandeja del sistema:



- Puede acceder a Microsoft Bluetooth Stack haciendo doble clic en el icono de Bluetooth de la bandeja del sistema, o seleccionando el icono de Bluetooth del Panel de Control.

ITALIANO

Installazione:

Windows 8.1/10/11 (32/64 bit)

- Inserire il ABBY07B in una porta USB disponibile del computer. Il ABBY07B verrà riconosciuto e installato automaticamente dal computer. Non è necessaria nessuna installazione di driver.

Windows 7 (32/64 bit)

- Scaricare e installare il driver del ABBY07B da https://www.conceptronic.net/conceptronic_en/amfile/file/download/file/16248/product/12485/
- Inserire il ABBY07B in una porta USB disponibile del computer.

Uso:

- Dopo che il computer avrà automaticamente installato il driver di default di Microsoft, apparirà un'icona di Bluetooth nel vassoio di sistema:



- È possibile aprire il Bluetooth Stack di Microsoft facendo doppio clic sull'icona nel vassoio di sistema, o selezionando l'icona di Bluetooth contenuta nel pannello di controllo.

PORTUGUÊS

Instalação:

Windows 8.1/10/11 (32/64 bit)

- Insira o ABBY07B numa porta USB disponível do seu computador. O computador vai reconhecer e instalar automaticamente o ABBY07B. Não é necessária a instalação de qualquer controlador.

Windows 7 (32/64 bit)

- Transfira e instale o controlador de ABBY07B a partir de https://www.conceptronic.net/conceptronic_en/amfile/file/download/file/16248/product/12485/
- Insira o ABBY07B numa porta USB disponível do seu computador.

Utilização:

- Depois de o seu computador ter instalado automaticamente o controlador predefinido da Microsoft, aparece um ícone Bluetooth na sua bandeja de sistema:



- Pode aceder ao Stack Bluetooth da Microsoft fazendo um duplo clique no ícone Bluetooth da sua bandeja de sistema, ou seleccionando o ícone Bluetooth no painel de controlo.

Instalacji:

Windows 8.1/10/11 (32/64 bit)

- Włóż ABBY07B do wolnego portu USB komputera. Komputer rozpozna i zainstaluje ABBY07B automatycznie. Nie jest konieczna instalacja sterownika.

Windows 7 (32/64 bit)

- Pobierz i zainstaluj sterownik ABBY07B z https://www.conceptronic.net/conceptronic_en/amfile/file/download/file/16248/product/12485/
- Włóż ABBY07B do wolnego portu USB komputera.

Stosowanie:

- Gdy komputer automatycznie zainstaluje domyślny sterownik Microsoft, w zasobniku systemu pojawi się ikona Bluetooth:



- Dostęp do Microsoft Bluetooth Stack można uzyskać poprzez dwukrotne kliknięcie ikony Bluetooth w zasobniku systemu lub wybranie ikony Bluetooth z panelu sterowania.



CE marking is a certification mark that indicates conformity with health, safety, and environmental protection standards for products sold within the European Economic Area (EEA). The CE marking is also found on products sold outside the EEA that have been manufactured to EEA standards. This makes the CE marking recognizable worldwide even to people who are not familiar with the European Economic Area.



WEEE is waste electrical and electronic equipment. It is end-of-life electrical and electronic equipment and covers virtually everything with a plug or battery. ...

The EC introduced the WEEE Directive in 2002 to address the environmental impacts of unwanted electrical and electronic equipment at end-of-life disposal.

Digital Data Communications GmbH

Im Defdahl 10 F, 44141 Dortmund, Germany

Email : support@conceptronic.net